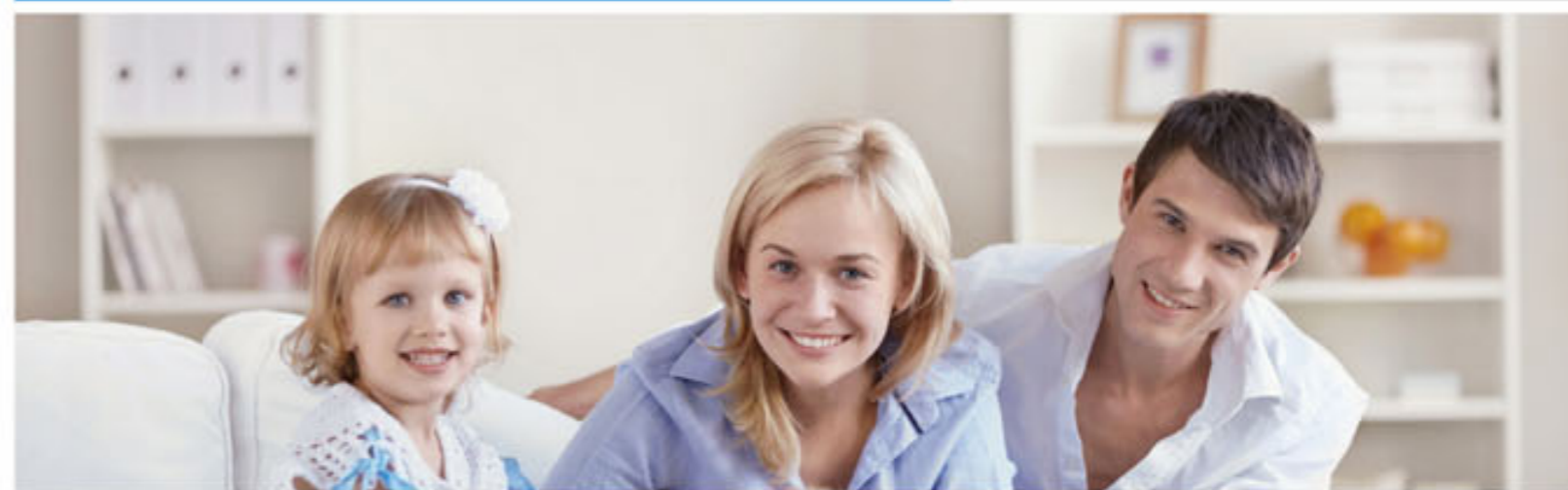


# ORICH家族

ORICH family



**ORICH** 邦盛医疗装备(天津)股份有限公司  
ORICH MEDICAL EQUIPMENT (TIANJIN) CO.,LTD.

地址: 天津开发区逸仙科学工业园翠鸣道16号  
邮编: 301726  
电话: 022-82160810  
传真: 022-82160813  
网址: www.orich.com.cn  
客服: 400 6850 899

Add: No.16 Cuiming Road, YAT-SEN Scientific Industrial Park, Tianjin  
Economic Technological Development Area, Tianjin, China 301726  
Tel: 022-82160810  
Fax: 022-82160813  
Http:// www.orich.com.cn  
Service center: 400 6850 899



注: 产品外型及技术参数如有变更, 恕不另行通知。  
Design and specifications subject to change without notice.

天津医药集团  
Tianjin Pharmaceutical Holdings Ltd.

为了生命的美好  
ORICH, All Reach.



## 公司简介

邦盛医疗装备（天津）股份有限公司是“天津市医药集团股份有限公司”和“美国邦盛集团”共同投资的专业研制生产医用放射诊断产品的高新技术企业。作为医疗影像产品的专业制造商，邦盛始终关注健康产业，坚持优化工艺与领先科技融会贯通，以安全稳定的品质铸就ORICH品牌，推进人类健康。

邦盛ORICH产品凝聚着计算机、电子技术、电真空、高电压、微电子和精密机械加工等多学科的先进技术。目前，我们在放射诊断、医疗影像、信息管理等方面均已处于领先地位，并且全心致力于将尖端的技术转化为最有竞争力的产品，从而为世界各地的人们提供更专业的医疗服务。

邦盛的产品囊括了放射诊断领域。ORICH旗下包括基础放射诊断X光机；高频数字化摄影系统；移动式X光机；全景牙科；数字乳腺X光设备等。同时，我们也是中国唯一拥有特种车产销资质和车载X光机生产资质的企业，为医疗机构量身定做各类流动体检车。邦盛已获得ISO9001、YY/T0287质量管理体系认证，所有产品都通过了中国质量认证中心的CCC认证、欧盟CE认证。

邦盛始终致力于倡导绿色医疗，提供高清晰、微辐射的产品，关注医师和患者健康，保护环境、保护您。邦盛的每一步成长都得益于社会的支持与关爱，在未来的发展中，我们也将竭尽全力，回报社会，共同推进人类健康事业。

## Company Profile:

Orich Medical Equipment (Tianjin) Co. Ltd. is a Sino-US joint venture by and between Tianjin Pharmaceutical Holdings Ltd and US Full State Group. It is a high-tech enterprise specializes in R&D and production of diagnostic radiology products. As a professional manufacturer of medical imaging products, ORICH did place, do place and will place high value on health industry and the combination of technology improvement and advanced technology, modeling the brand of ORICH through safe and stable quality to promote the development of human health cause.

ORICH' s products contain the advanced technologies in the fields of computer science, electric vacuum, high voltage, microelectronics, precision machinery and so on. At present, we have taken the leading role in the fields of radio diagnosis, medical imaging and information management, etc. Meanwhile, we devote ourselves to the shift of cutting-edge technology into products with competitiveness. Thus, we can better serve the world with more professional medical services.

ORICH' s products cover the field of radio diagnosis, including basic diagnostic X-ray machine, high-frequency digital photography system, mobile X-ray machine, panoramic dental and digital mammography X-ray equipment, etc. Meanwhile, we are the only enterprise possessing the manufacture and sales qualification of specially constructed vehicle as well as production qualification of vehicular X-ray machine, which enables us to provide medical institutions with various mobile medical vehicles. ORICH has been recognized by ISO9001 and YY/T0287 quality management systems; all its products are qualified by CCC Certificates of China Quality Certification Center, CE Marking of European Union.

ORICH has committed itself to the advocating green healthcare, providing HD and micro-radiation products, caring for the health of doctors and patients as well as protecting environment and everyone. Our every step has enjoyed the support and care of the society. In the future development, we will try our best to deliver reciprocation to society and promote the development of human health cause.



**ORICH**  
邦盛国际

## 我的家族兄弟众多

There are many members in my family.

- DF系列X射线设备
- FS系列数字摄影设备
- OX系列小型移动式X射线设备
- MO系列乳腺X射线设备
- BLUEX系列口腔X射线设备
- 流动医疗系列

- DF series X-ray diagnostic system
- FS series digital radiography system
- OX series movable system
- MO Series Mammography X-Ray Machine
- Bluex Series Dental X-Ray Machine
- Mobile Hospital



## 资质认证与质量保障

QUALIFICATIONS AND QUALITY ASSURANCE

我公司严格按照国家标准、行业标准、企业标准进行生产。目前，已通过的相关部门认证证书包括但不限于以下方面：

- 质量管理体系认证ISO9001：2000；
- 医疗器械质量管理体系认证ISO13485：2003；
- 中国国家强制性产品认证CCC；
- 欧盟CE认证；
- 12个SFDA中国医疗器械产品注册证书；
- 辐射安全许可证；
- 联合国合格供应商资格；
- 中国医疗器械最具竞争力企业50强，诚信企业30强；
- 天津市自主创新重点产业化项目实施单位。

.....



Production strictly complies with the national standards, industrial standard and corporation codes etc. Till now, the certificates has been awarded included but now limited to the following;

- Quality Management Qualification ISO 9001:2000;
- Medical Equipment Quality Management Qualification ISO13485:2003;
- CCC Certificate
- EU CE Certificate
- 12 SFDA Certificates
- Radiation Safety Certificate
- UN Qualified Supplier Qualification
- Top 50 Medical Equipment Manufacturers in China, Top 30 Credit Enterprises;
- Tianjin Key Innovative Project Leading Enterprise



**DF-110A 医用专业透视X射线诊断设备**

DF-110A Medical Diagnostic X-ray System

- 高千伏，小焦点，有效提高图像分辨率。分立式球管满足长时间团队体检的需要。
- 图像存储，并可将存储图像进行同屏显示对比。
- 实现图像采集、存储、负像、镜像、拼图等功能。
- 滤噪运算采用运动检测和图像增益相结合的方法使图像运动伪影降到最低。
- 双路视频输出，优秀的图像还原功能再现图像应有的动态范围、亮度和对比度。
- High voltage, small focus, the image resolution is improved. Separate tube meets the requirement of long time group examination.
- Achieve image acquirement, storage, negative image, mirror image, comparison image, etc.
- Movement detection which combines with image intensification minimizes image dynamic artifact.
- Dual video output, excellent image revivification reverts to image dynamic range, brightness and contrast.

**DF-211H 高频X射线摄影设备**

DF-211H High Frequency Medical Radiographic System

- 高频化设计，影像清晰，主机控制实现微机化，精确可靠。
- 高品质X射线管，高千伏，小焦点，满足各种摄影要求，使胶片更加清晰。
- 一体化摄影床，运动稳定可靠，操作便捷。
- 摄影床、立柱均采用高强度轻质合金铝一次成型。
- Advanced high frequency design ensures the image of the highest quality, computer controlled, operate simply and conveniently.
- Excellent X-ray tube, high Kv, small focus. Various types of radiographic requirements can be met.
- A single radiographic table, which provides the perfect solution by virtue of its extreme flexibility, can move stably and reliably, operating conveniently.
- Table and chest stand both are molded by one step by using the high strength and light aluminium alloy.

**DF-625H-1 高频X射线诊断设备**

DF-625H-1 High Frequency X-ray Diagnostic Equipment

- 50kHz 高频主机，150KV的摄影千伏，50KW的高能量。
- X射线管移动行程充分满足消化道以及腹部造影临床诊断需求。
- 数百种APR解剖摄影程序，让您像翻阅菜单般轻松完成每次摄影。
- 图像存储、运动减噪、图像翻转、正负图像、末帧冻结。
- 人性化设计，充分提高被检者的安全感和舒适性。
- 50kHz high frequency generator, 150kv for radiography, 50kw high power.
- The x-ray tube has a large longitudinal stroke, adequately satisfy different diagnostic requirements.
- With hundreds of APR you can finish radiography every time easily as if you are reading a menu.
- Amplitude memory, movable noise reduction, image turn, positive and negative image as well as terminal freezing.
- Humanity design improves patient's feeling of comfort and safety.

**DF-323H 高频数字化X射线诊断系统**

DF-323H High Frequency Digital X ray Diagnostic System

- 高频主机50KW系统，恒定直流输出，大功率高千伏摄影，成像效果更佳。
- APR程序摄影提供上千种摄影组合条件，并可根据临床需要预置，存储摄影条件。
- 超短时曝光，轻松捕获瞬间图像。提供最佳的影像质量，提高影像诊断的准确性。
- 紧凑型岛屿式床台设计，完美实现成人，儿童肠胃等各类诊断，满足介入治疗的特殊需求。
- Adopting 50kw high frequency technology, output constant high voltage direct current, low ripple factor, clearer and sharper image.
- Automatic Program Radiography (APR), providing thousands of types of radiographic conditions, can set and save radiographic conditions for the especial requirements.
- Short time exposure, easy to acquire the instantaneous images. Providing image of superior image quality, the accuracy of radiographic diagnosis is improved.
- Compact island design of the diagnostic table perfectly realizes diversified diagnoses, and can satisfy the especial requirements of the intervention cure.





### FS-500DDR 高频数字化医用X射线摄影系统

FS-500DDR High Frequency Digital X-ray Radiography System

- 高频主机，APR自动程序摄影，轻松捕获瞬时图像。
  - 原装进口X射线管，高千伏，小焦点。
  - 超薄高分辨率平板探测器，呈现清晰图像。
  - 先进灵活的UC臂架，全角度旋转，运动平稳。
  - 智能化数字图像采集处理系统，优秀的人机界面。
  - 满足单一工作站或完整PACS系统的全面解决方案。
- High voltage generator, APR auto radiography, instantaneous image can be caught easily.
  - Imported X-ray tube with high KV and small focus.
  - With ultrathin and high resolution panel detector, clear image can be displayed.
  - Advanced and flexible UC-arm can rotate in full angle and move smoothly.
  - Intelligent digital image collection and treatment system and possesses excellent human-machine interface.
  - Providing comprehensive solution to single work station and complete PACS system.



经济型平板  
Economic flat panel detector

非晶硅平板  
Amorphous silicon flat panel detector

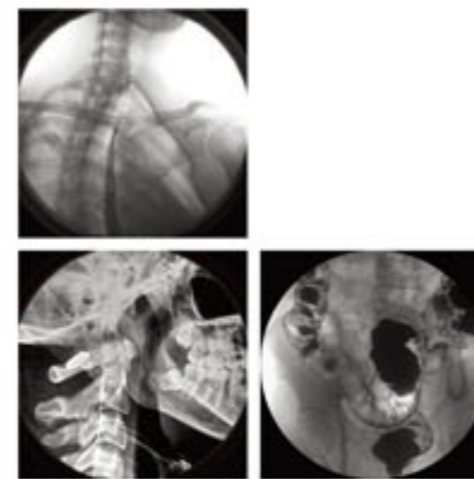
### OX系列移动式X射线设备

OX Series Mobile X-ray Equipment

#### OX-C500 高频C型臂数字化X光机

OX-C500 High frequency C-arm Digital X-ray Machine

- 采用先进高频逆变技术，输出恒定高压直流，纹波系数低，影像更清晰锐利。
  - 紧凑型设计，适用于狭小空间，使用更灵活。
  - 虹膜束光器，X射线成像剂量更精确，避免多余X射线曝光。
  - C臂开口大，移动范围广，操作便捷，适用于手术使用。
- Adopting high frequency contravariant technology, output constant high voltage direct current, low ripple factor, clearer and sharper image.
  - Compact style suitable for small space, flexibility in use.
  - Iris collimator ensures more accurate x-ray beam, avoiding unnecessary x-ray exposure.
  - Big open mouth of C-arm grants large moving range, convenient and fast operation, suitable for operation use.



### OX-320H 高频移动式X射线摄影机

OX-320H High Frequency Mobile X-Ray Radiography System

- 轻巧的设计理念，易于移动，便于操控。
- 摇臂自平衡，操作简洁流畅，定位轻松准确。
- 双控制摄影功能，兼顾安全与效率。
- 该款移动DR具有先进的平板探测技术。
- 成像速度快，图像质量好。
- Light and handy design allows easy mobilization and convenient operation.
- Rocker arm can be self-balanced, easy for moving, operation and control.
- Possess double control radiographic function; safety and efficiency are both taken into consideration.
- This mobile DR possesses the advanced panel detecting technology.
- Fast and high quality imaging.



### MO系列乳腺X射线诊断设备

MO Series Mammography X-ray Equipment

#### MO-35 模拟乳腺X射线诊断设备

MO-35 AR Mammography X-ray Diagnostic System

- 采用全球最尖端的乳腺成像技术，以最经济的费用为患者提供无微不至的关怀。
- 完全独立的乳房X光检查装置，即使大量患者体检也可以得到高质量的图像。
- 等中心C型臂，确保乳房投影无需移动病人，调整C型臂的高度即可方便完成。
- 颅骶管和横向投影时，只须等中心旋转，无需调整C型臂高度。
- Providing patients with meticulous care at lowest cost by adopting the international advanced mammography image technology
- Completely independent mammography x-ray examination equipment, high quality image can be obtained even for examinations of large quantity of patients
- With isocentric C-arm, the projection of breast can be realized by adjusting the height of C-arm without moving patient
- The isocentric rotation eliminates the C-Arm height adjustment when doing Cranio-Caudal and lateral projections





**MO-35DR 数字乳腺X射线诊断设备**  
MO-35 DR Mammography X-ray Diagnostic System

- 采用目前最先进的非晶硒探测器技术，更高信噪比，更高效率。
- 通过非晶硒，成像的X光可直接转化为电荷，直接将X光能量清晰显像出来。
- 采用直接检测可避免X光散射效应，确保图像清晰可靠。
- 平滑的压迫系统，提升患者检查过程的舒适性。
- Adopting the most advanced amorphous selenium detecting technology, highest signal/noise ratio, highest efficiency
- With amorphous selenium, X-radiation is transformed into electric charges, x-ray energy is directly imaged clearly
- Direct detection avoid light diffusion, ensure the clarity and quality of the image
- Smooth compression paddles design for higher patient comfort



**BLUEX 系列口腔X射线诊断设备**  
BLUEX Series Dental X-ray Diagnosis Equipment

**PantOs DG Plus 口腔全景及头颅定位X射线机**  
PantOs DG plus Dental Panoramic and Ceph Positioning X-ray Machine

- 使用CCD传感器，可获得最大清晰度的全景和头部检查图像。
- 自动图像获取、快速处理和电脑屏幕上突出显示最重要细节，易于使用。
- 系统结构紧凑、舒适易用，使用三束激光，校正患者体位，以确保完全对正。
- 恒电势X光发生器是成像过程中的一个极其重要的环节。
- 阳极电压可根据需要调节，增强了对致密结构的穿透力以及头部软组织的可见度。
- 具备USB接口，快速图像数据传输。

- With CCD sensor, the clearest panoramic and cephalometric image can be produced
- Auto image acquisition, fast processing, most important information display on the screen, easy for use
- Compact and comfort structure, use of three laser beams ensures perfect centering
- Constant potential X-ray generator is the key point for imaging
- Anode voltage can be adjustable according to the requirement, which enhances the penetration power of compact structure and visibility of cephalometric soft tissue
- USB port is available for fast image data transmission



### PantOs 16 XP 全景口腔X射线机

PantOs 16 XP Dental Panoramic X-ray System

- 高频恒电势X光发生器，提供最优化的X光计量。
- 具有7个全景和3个头部检查程序，适用于4类不同体型的患者。
- 液晶控制面板，形象直观的指示符号，操作便捷。
- 系统结构紧凑，舒适医用，可以固定在墙上或单独站立。
- Constant potential high-frequency multi-pulse X-ray generator microprocessor controlled.
- 7 types of panoramic examinations and 3 for ceph, both combining 4 patient' s sizes.
- LCD control board with direct visualized designated symbol for convenient operation.
- The overall structure is compact. It can be mounted on the wall or self stand.



### Intra Os 70 单牙口腔X摄影机

IntraOs 7.0 Single Tooth X-ray Radiography System



- 根据牙型和患者的体形使用目标程序自动控制曝光，也可以手动控制。
- 可根据需要选择是否自动校正电源电压波动。
- 通过准确的冷却程序，为射线管提供完全过热保护，减少等待时间。
- 使用选择性报警信息和备用定时器提高了安全性能。
- 可选配数字牙科传感器和图像工作站。
- Exposure can be controlled by object program automatically according to the sizes of teeth and figure of patients or by hand.
- Mains fluctuation is automatically corrected as required .
- Full protection against tube over-heating with accurate cool down procedure for minimum waiting time .
- Improved safety features with selective alarm messages and back up time.
- Digital dental sensor and image work station is optional .

### 全程服务\Excellent service

欢迎致电400-6850-899，希望不远的一天，您也能像全球上万家医疗机构一样，拥有一台心仪的、高品质的邦盛产品，体会ORICH全程贴心的服务。

Welcome to call +86-400-6850-899, wish you, like thousands of worldwide medical institutions, to hold a favorite high-quality ORICH product and to experience ORICH whole-course considerate service in the near future.

