



MGS

medical gas systems

“Proven Skills & Smart Solutions”

Optimal Solutions for Medical Gas Central Stations



The systems installed by Nassetti are modern, reliable and are manufactured up to the latest technology, and can be designed in accordance with American NFPA, European EN, German DIN, British HTM and BS standards and all safety measures.

Nassetti has a variety of projects about 50000 beds ranging from single line installations to large hospital projects.

MEDICAL GAS CENTRAL STATIONS

Compressed Air Plants

Designed to provide the necessary air flow determined according to drawings and calculations; depending on capacity requirements

Simple and safe handling of compressors, no anchoring is required

Special manufactured steel reserve tank, that can withstand 20 bars pressure

Breathable air drier set option, to provide a complete, integrated solution of drying, filtration and adsorption stages in compliance with the European Pharmacopoei

Fully compatible solutions for outlets of different norms



Vacuum Plants

Special filter cartridge making oil/gas separation and also absorbing the evaporated oil at the same time

Bactericide filter unit, composed of a preliminary particle holder, holding microorganisms up to 0,03 microns

Electrical control panel for system control, commanded by the electrical contact vacuummeter on itself

INTERNATIONAL SOLUTION PROVIDER





Decompression Plants for Gases in Cylinders (Oxygen, Nitrous Oxide, Nitrogen, Carbon Dioxide, etc.)

Designed according to the principle of continuity in supply; there is no discontinuity during the changing process of empty cylinders of ramp; moreover, the other ramp does operate following this change, until the ramp in operation is unable to supply the needed capacity

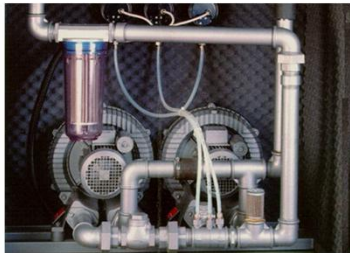
Perfect connection of cylinders with ramps

Over pressure safety valve

Audible alarm circuit



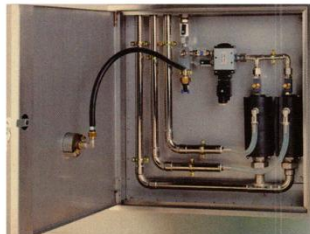
CE
0120



Anesthetic Gas Evacuation Systems

Both venturi type and electropumps type systems are available

The system is equipped with audio-visual alarm-control units



SERVICING & MAINTENANCE

We are setting the standards of excellence in medical gas servicing & maintenance by offering an extensive high quality service.

Our maintenance and installation team is trained with the requirements of the relevant standards of medical gas systems and we supply a full range of services, including the supply of high quality spare parts, installation, testing, and maintenance.

We are known for the capabilities of our service department that will ensure fast response.



BREATHABLE AIR, PHARMACOPIA

Used for a wide variety of applications, such as anaesthetics, lung ventilation, intensive therapy, pneumatic surgery tools, nebulisors, and many more, where the quality of the air is vitally important.

The European Union has recently issued a document in which air for medical use is listed as a medicine and the document further details exacting quality standards to which the air supply must comply.

Medical air is one of only **medicine** that is manufactured on-site at the hospital by the medical gas system.

Its preparation, therefore, needs to be given close attention.

Provides a complete, integrated solution of drying, filtration and adsorption stages to provide the quality of air stipulated by the European Pharmacopoeia.



NETWORKING EQUIPMENT

Copper Pipes

Hard tempered pipes, with material Sf-Cu DIN 1787, with tolerances according to EN 1057, and tested as per EN 13348 standards.



Medical Gas Outlets

Outlets to European EN, German DIN, British BS and American NFPA norms are available

Ball Valves

Ergonomic copper pipe connection

The valves are mounted within a box with plate in order to allow any necessary interventions to be made easily



Zone Control Units

Compliance with EN ISO 9170-1, EN ISO 9170-2, EN 7936 standards

Ease of use and service

Box with covers suitable for semi-embedded or external mounting

Electrostatic powder coated and aluminium box options

Body depth suitable to any partition wall

Alarm units



Second Stage Pressure Reducers

Box with cover, suitable for semi-embedded or external mounting

Body depth suitable to any partition wall

Compliance with the EN ISO 11197, EN ISO 9170-1, EN ISO 7396-1, EN ISO 10524-2, EN 837-1 standards

Ease of use and service

Advanced installation techniques



Emergency Maintenance & Supply Unit

Compliance with EN ISO 7396-1, EN ISO 9170-1 and 11197 standards

Ease of use and service

Advanced installation techniques

First class materials in compliance with standards

Ease of use and servicing



TERMINAL UNITS

PATIENT BEDHEAD UNITS



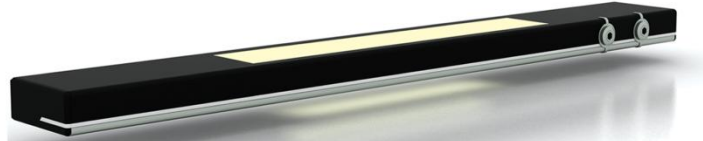
Eva

For systematic solutions providing efficient use of space for devices and equipment, while allowing for connection to services like medical gas, electricity, nurse call, intercom, music systems and lighting at the patient bedhead, with an aesthetic look complementing the room's general atmosphere.



Melis

Nassetto's new bedhead unit, MELIS, took its place in Nassetto's product range in July 2009. The design reflects a contemporary shape with its smart and modern lines, slim and rectangular form. Another novelty is the option to choose an innovative LED solution of the reading and night lights.



Pittura



Arte

Pittura & Arte

Private designs providing aesthetics through decorative illumination armature and the warmth of wooden and converting the patient room to a comfortable, refined ambience, while hiding medical gas, electricity, nurse call, intercom, music systems behind a painting frame.



INTENSIVE CARE UNITS

Prism & Care

For systematic solutions providing efficient use of space for devices and equipment, while allowing for connection to services like medical gas, electricity, nurse call, intercom, music systems and indirect lighting at the patient bedhead, with an aesthetic look complementing the room's general atmosphere.



Intense®



New bedhead unit developed by Nassetti, has taken its place in Nassetti product range since March 2011. The design has emerged from using the same profile with different covers, it has a modern and simple view. Intense® offers a lighting option for night and reading through the lamps located at the upper and the lower covers. The lighting options at the normal patient room has offered to patients and users at the intensive care areas. Intense® has created a new approach to today's intensive care areas with its different color alternatives, simple design and modern view.



Care



Prism

PENDANT SYSTEMS

BRIDGE

For systematic solutions providing optimum use of space for devices and equipment, while allowing easy access of the medical staff to the patient and ability to perform their work comfortably.



SOME OF OUR REFERENCES



American Hospital, 2000, Istanbul



Esenguly Etraf Hospital, Turkmenistan, 100beds,
turnkey MGS project, 2009



"Astana Republic Neurosurgery and Science Center",
Kazakistan, 160 Beds, 2008



*proven skills
& smart solutions*

Nassetti Tıbbi Cihazlar San. ve Tic. Ltd. Şti.
Merkez Mahallesi Köyalı Mevkii Oruç Reis Sokak No:6
34197 - Yenibosna
İstanbul - Turkey
T: +90 212 451 0 450 (pbx)
F: +90 212 451 44 90

Web: www.nassetti.com.tr
Sales: sales@nassetti.com.tr
Service: service@nassetti.com.tr

