

# RetCam™ Shuttle

*Transportable Retcam for the hospital and clinic*



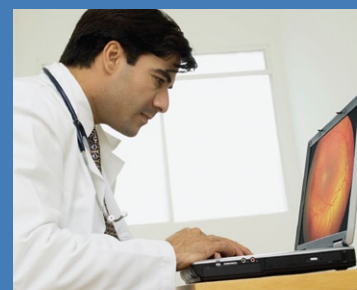
## *The RetCam Shuttle*

- *Maneuverable in constrained areas – NICU, PICU and physician office*
- *Transportable between hospitals and clinics*
- *Enables transfer of images to any networked system*
- *Allows timely remote evaluation of patient images*
- *Provides advanced image analysis and compare capability with the RetCam Review Software*



### *Broader Patient Access*

The RetCam Shuttle allows easy maneuverability within the hospital and easy transport to affiliate hospitals and clinics.



### *Networking and Image Transfer Utility*

Digital Images can be transferred directly to your networked server or to your physician specialist for remote review.

Incorporating the RetCam Shuttle into your diagnostic care program enables accessibility to patients who require timely initial evaluation and follow up exams. Network access allows physicians to analyze time-sensitive data from any location using the RetCam Review Software.

**Clarity**  
medical systems

# RetCam Shuttle

## System Components

## RetCam Shuttle

- 1 Notebook with large LCD display for real-time video, image processing and transfer
- 2 Work surface with convenient hand piece holster
- 3 3-chip CCD camera
  - Lightweight, easy to position
  - Long cable for easy patient access
  - Use with 5 changeable lenses
- 4 Hinged access doors for upper and lower storage compartments
- 5 Secondary work surface
- 6 Lens storage box
- 7 Container for tools and supplies
- 8 Internal hand piece holster for storage during transport
- 9 Tri-function foot control
  - Individual pedals for easy light intensity and focus adjustment
  - Central button switch for video/image capture
- 10 Dual wheel casters for easy maneuverability
- 11 Easy-grip extendable handle for system transport



### Technical Specifications

#### Notebook Computer

Operating System:	Windows® XPe (Embedded)
Processor:	Core Tz Duo 2.53 GHz
Connectivity:	LAN, USB
Hard Disk Storage:	160 GB
System Memory:	2.0 GB
Optical Media Drive:	CD and/or DVD
Display:	15.4 inch, Bright View
Patient File Import/Export:	Windows file transfer. Clarity format and/or Ophthalmic DICOM

#### Imaging Cart

Footprint:	19" x 18.5"
Work surface height:	34.8"