

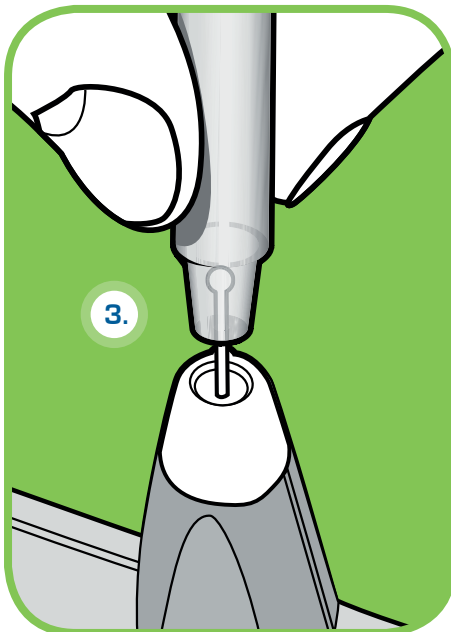
QUICK GUIDE

icare
tonometer

TURNING THE TONOMETER ON AND LOADING THE PROBE

ALWAYS USE WRIST STRAP
FOR SAFE AND SECURE USE

1. Press the measuring button.
2. When display shows LoAd, load the single use probe into the tonometer as follows:
3. Open the probe tube. Remove the cap and insert the probe into the probe base. Be careful not to drop the probe from the tonometer.
4. Press the measuring button once. The tonometer is ready for use when 00 appears on the display.



MEASUREMENT

1. Ask the patient to relax and look **straight ahead at a specific point** to keep the eye steady during the measurement.
2. Bring the tonometer near the patient's eye. Check that the **central groove is in a horizontal position**. It's not necessary to look at the display during the measurement since the device gives sound signals about errors etc.
3. Keep the distance from the tip of the probe to the patient's cornea at **4 to 8 millimeters (1/6-1/3 inch)**. If necessary, adjust the forehead support.
4. Press the measuring button lightly. The tip of the **probe should make contact with the central cornea**.
5. Six measurements are made. Once the six correct measurements are done, the IOP will be shown on display.
6. Please refer to the manual for additional information.



ONE SHORT BEEP —

Indicates a correct single measurement.

DOUBLE BEEP - -

Indicates an incorrect measurement. (See error codes from manual).

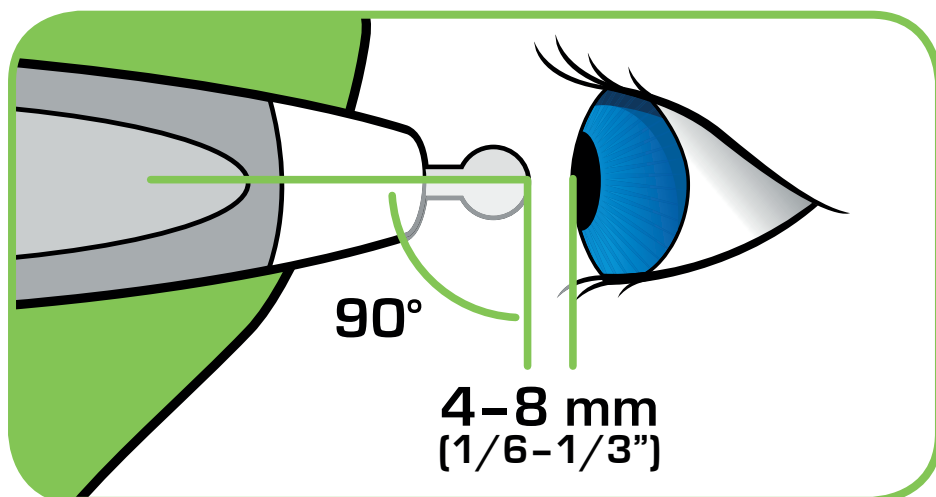
LONG BEEP ———

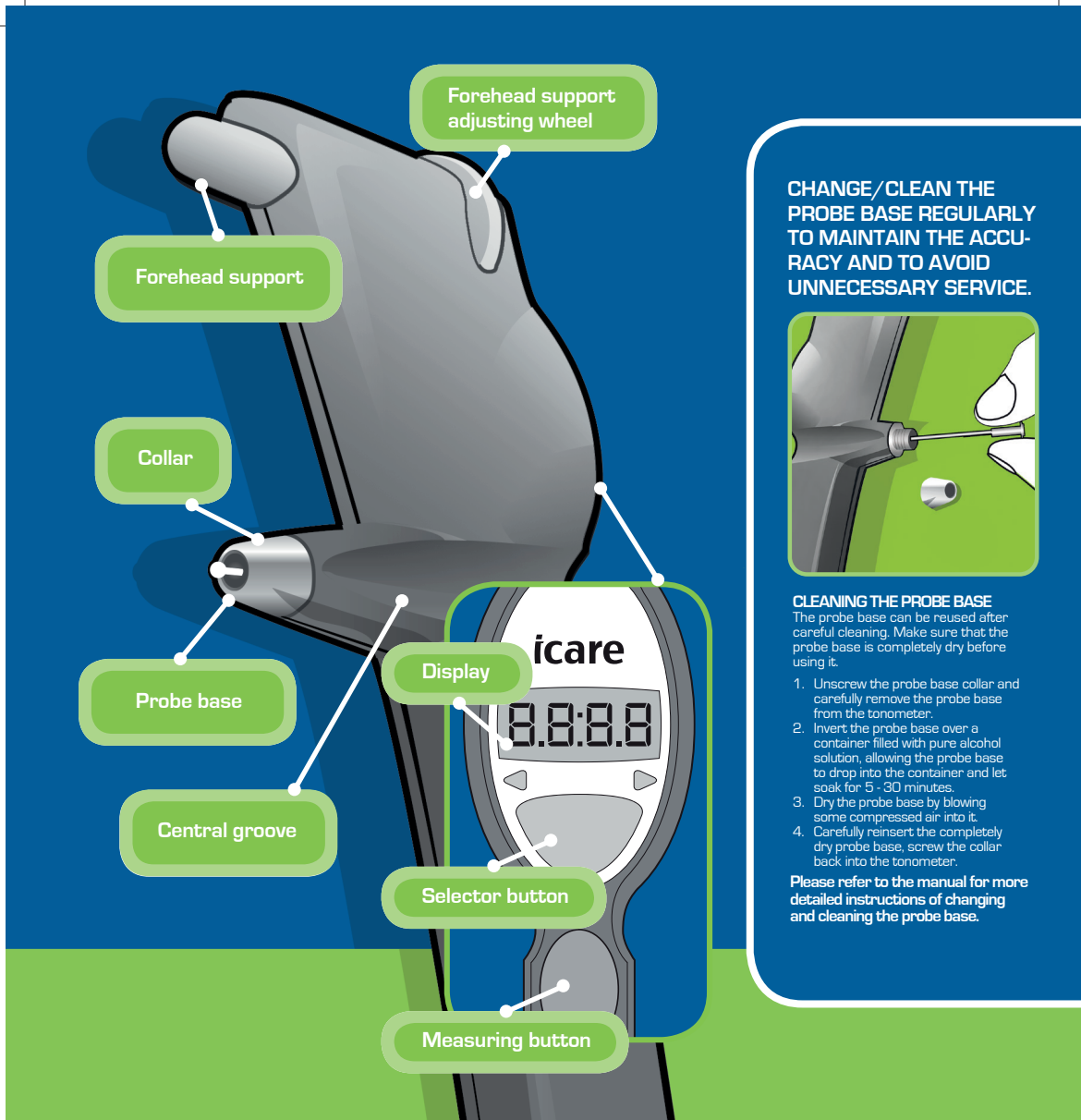
Indicates that six successful measurements are done and IOP result is available at the display.



Press either selector button until the display shows 'End'. Press the measuring button for two seconds - the display will show 'byE' and the tonometer will switch off.

If the tonometer is not used for two minutes, it will automatically switch off.





CHANGE/CLEAN THE PROBE BASE REGULARLY TO MAINTAIN THE ACCURACY AND TO AVOID UNNECESSARY SERVICE.



CLEANING THE PROBE BASE

The probe base can be reused after careful cleaning. Make sure that the probe base is completely dry before using it.

1. Unscrew the probe base collar and carefully remove the probe base from the tonometer.
2. Invert the probe base over a container filled with pure alcohol solution, allowing the probe base to drop into the container and let soak for 5 - 30 minutes.
3. Dry the probe base by blowing some compressed air into it.
4. Carefully reinsert the completely dry probe base, screw the collar back into the tonometer.

Please refer to the manual for more detailed instructions of changing and cleaning the probe base.

icare

measuring
excellence

www.icaretonometer.com