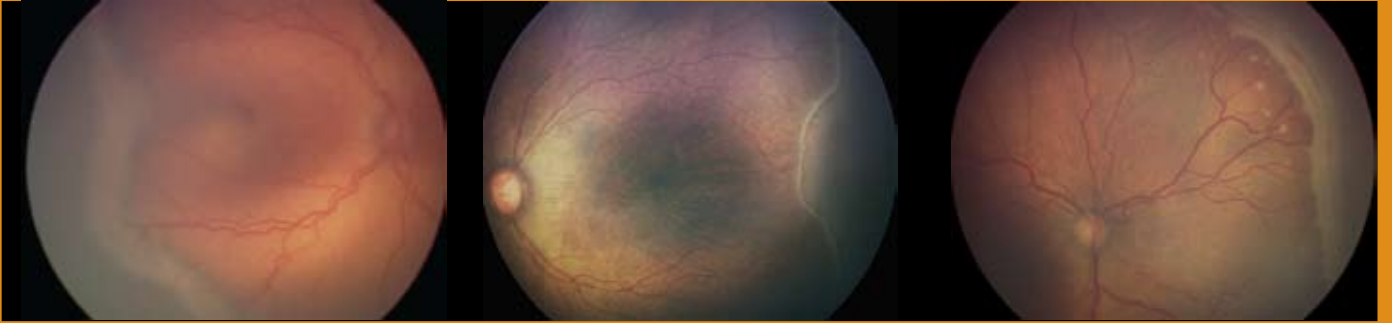


RetCam™ Images

Retinopathy of Prematurity



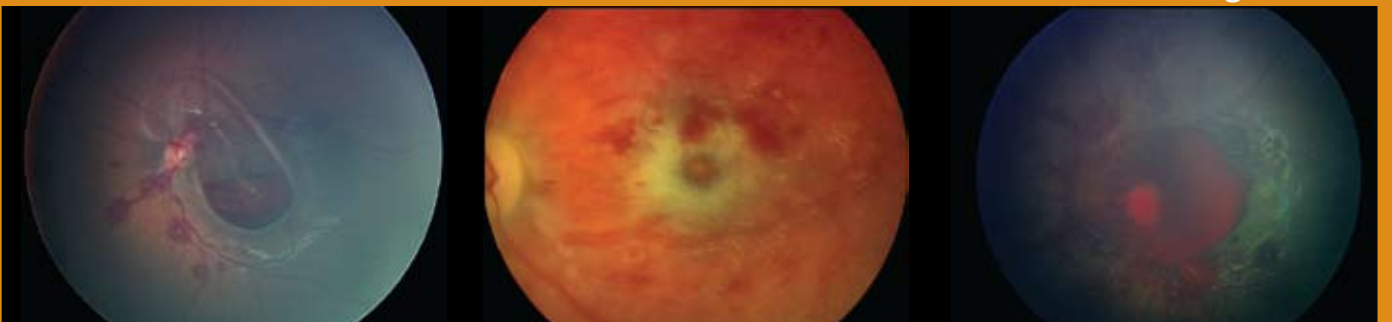
Fluorescein Angiography



Retinoblastoma


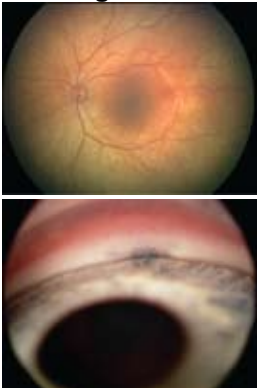

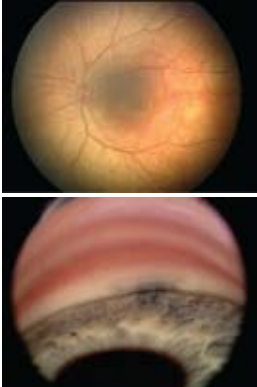



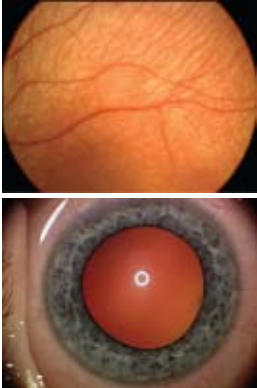




Retinal Hemorrhages



The Anterior Chamber



Lens	Field of View	Applications	Advantages
<p>D1300</p> 	<p>130 degrees</p> 	<p>Pediatric Fundus</p> <ul style="list-style-type: none"> - Posterior Pole - Equator and Ora Serrata - Retinal Vasculature - Hemorrhages - Tumors and structural abnormalities <p>Anterior Chamber</p> <ul style="list-style-type: none"> - Iridocorneal Angle - Iris structure - Crystalline Lens changes - Tumors and masses 	<ul style="list-style-type: none"> • Wide Field of View • Small tip facilitates imaging small babies • Light weight • Multipurpose wide-angle posterior and anterior applications
<p>B1200</p> 	<p>120 degrees</p> 	<p>Pediatric Fundus</p> <ul style="list-style-type: none"> - Posterior Pole - Equator and Ora Serrata - Retinal Vasculature - Hemorrhages - Tumors and structural abnormalities <p>Anterior Chamber</p> <ul style="list-style-type: none"> - Iridocorneal Angle - Iris structure - Crystalline Lens changes - Tumors and masses 	<ul style="list-style-type: none"> • Greater contrast than the D1300 • Suited for imaging the pigmented retina • Can be used for imaging the Iridocorneal Angle • Multipurpose wide-angle posterior and anterior applications
<p>E800</p> 	<p>80 degrees</p> 	<p>Pediatric and Adult Posterior Pole</p> <p>Detailed views of:</p> <ul style="list-style-type: none"> - Disease processes - Macular disorders - Vascular malformations - Posterior tumors and lesions 	<ul style="list-style-type: none"> • Increased contrast • Moderate magnification • Suited for detail of the Posterior Pole and the adult retina
<p>C300</p> 	<p>30 degrees</p> 	<p>Pediatric and Adult Macula and Disc</p> <p>High magnification of:</p> <ul style="list-style-type: none"> - Macular detail - Optic Nerve structure - Neoplastic pathologies <p>Non-contact Anterior Chamber</p> <ul style="list-style-type: none"> - Lens opacities - Iris detail - Conjunctival lesions 	<ul style="list-style-type: none"> • High contrast/magnification for macular views • Enables non-contact Anterior Chamber views • Creates good red-reflex image in non-contact mode when the eye is dilated
<p>Portrait Lens</p> 	<p>Portrait Lens</p> 	<p>Iris and Conjunctiva</p> <p>Lids and lashes</p> <p>Positions of gaze</p> <p>External trauma</p>	<p>Easy capture of external views from close up to distance including:</p> <ul style="list-style-type: none"> • Ocular adnexa • Both eyes • Face • Clinical setting and procedures